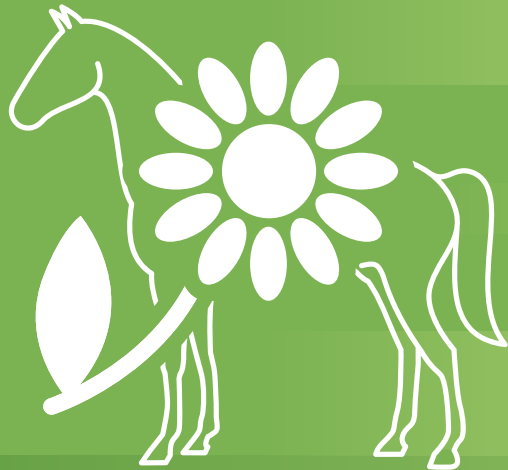


A Stress-free Process Towards a Pleasant Result



Your horse gets a healthy saddle.

The Benefits for You and Your Horse

- Precise scanning performance of the horse's back, which is unmatched by any conventional system.
- Mobile, easy and safe measurement process, completely harmless for your horse.
- The measurement is done in a matter of seconds.
- Exact life-sized models give you more transparency and certainty in the saddle fitting process.
- Subsequent changes to the horseback can be detected quickly with the life-sized negative model and the saddle can then be adjusted.
- You can keep the horse safe from pain or irreparable damages to the back.

Your Partner for a Tailor-made Saddle



Sadelmager Jan Guldborg

Everdrupvej 27
4733 Tappernøje
DENMARK

Tel. +45 21732737
mail@sadelmagerjanguldborg.dk
sadelmagerjanguldborg.dk

www.horseshape.com

 **HORSESHAPE**

Precise
Scanning Performance
for a
Healthy
Saddle

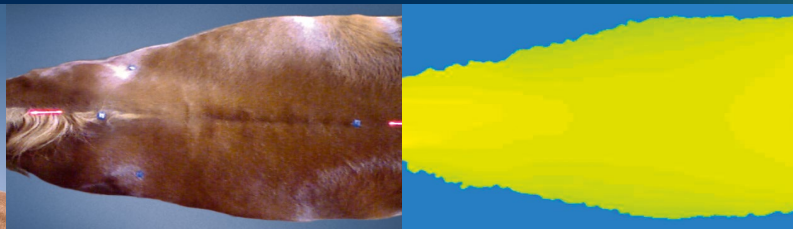
Mobile. Easy. Safe.



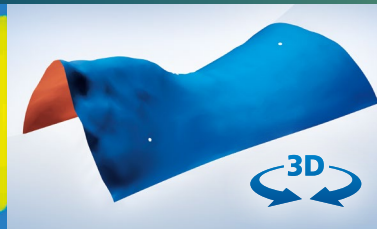
Trendsetting and Proven in Practice –



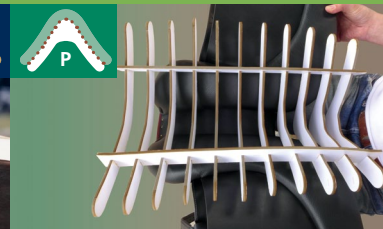
MOBILE... usage of the entire compact 3d measurement system. Your horse can easily be digitally measured in the stable. It is done without much effort and hassle-free for the horse.



EASY... to use. The laser scanning is done within seconds. With the help of four small applied reference points a reliable and three-dimensional measurement result is generated.



SAFE... by precision and transparency of the measurement results. The system is field-proven since 2011 and the high measurement point accuracy cannot be achieved with conventional methods.

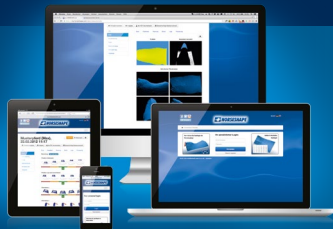


The positive model is used to fit a tailor-made saddle for the horse. Pain and permanently irreparable damages caused by a poorly fitted saddle can be avoided.

Normal changes to the horseback over time can be easily identified with the negative model. The saddle can then be adjusted again.

This permanently ensures a well-fitting saddle for the horse – an important contribution to long-term health.

 **HORSESHAPE**



The analysis of the measurement data is also mobile and easy. It is securely managed on a password protected online platform. You can access the data across all devices (PC, tablet, smartphone).

Based on the evaluated measurement data, life-size models are manufactured. They precisely reshape the back of the horse at the time of measurement. These models allow reliable monitoring and horse-friendly saddle production.